

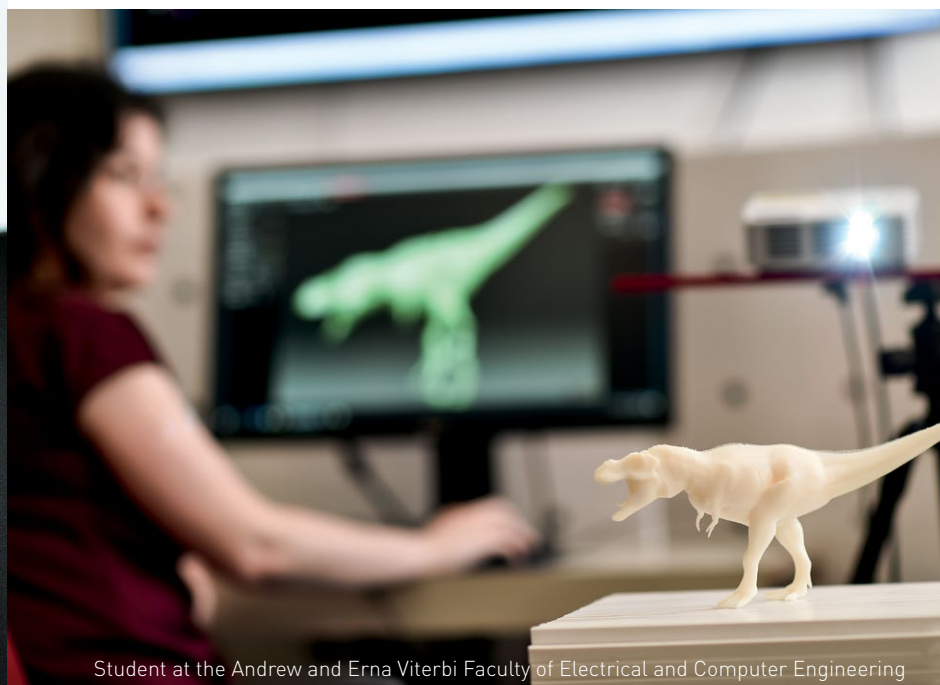
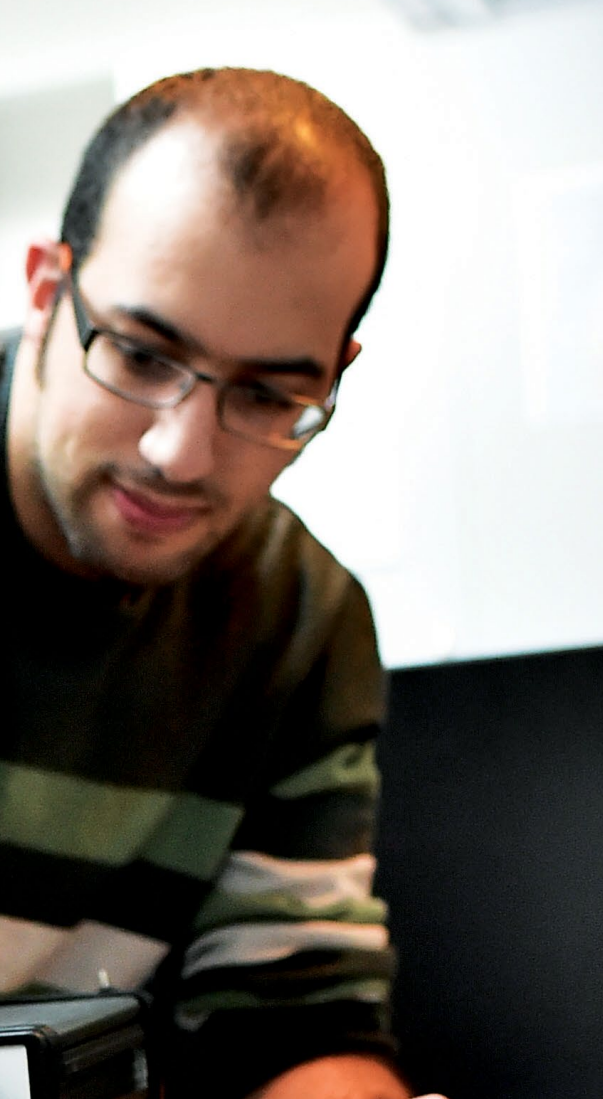
Facilities for Naming in the **Zisapel Research Building**

Andrew and Erna Viterbi Faculty of
Electrical and Computer Engineering



Architect's rendering of the new Zisapel Research Building





Student at the Andrew and Erna Viterbi Faculty of Electrical and Computer Engineering

The Technion's Andrew and Erna Viterbi Faculty of Electrical and Computer Engineering has been instrumental in advancing Israel's high-tech industry and transforming the country into the "Start-up Nation." The Faculty has garnered a global academic reputation and attracted major international corporations to Israel in the fields of electronics, computers, and communications.

In order to respond to Israel's defense requirements and the needs of high-tech industry, the Council for Higher Education has called upon the Technion to increase enrollment in technology-oriented degree programs. Moreover, the swift evolution of technology requires Israel to continually innovate and adapt to remain competitive in an increasingly fierce global economy. Responding to this dynamic environment, the Faculty has recently entered into rapidly developing new fields and now seeks to further expand into these and additional areas of vital importance. The Faculty is poised to assume this leadership role. It has the will, the knowledge and the leaders who can motivate others, and it is expanding the physical facilities necessary for the large and growing student population and new faculty recruits.



Zisapel Research Building

BUILT UP AREA

47,000 sq. ft.

4,400m²

FLOORS

7

RESEARCH
LABORATORIES

11

CONFERENCE
ROOMS

3

OPEN STUDY
AREAS

6

OFFICES

42



To accommodate the Faculty's expanded activities, the seven-story, approximately 4,400 square meters (47,000 sq. ft.) Zisapel Research Building is being constructed adjacent to the Bella Meyer Advanced Technology Center. It will house 11 research laboratories, 42 offices, three conference rooms, a computer center, six open study areas, a cafeteria, a patio, and an entrance lobby (as well as service rooms for communications, A/C, etc.).

The ground floor will feature a striking glass-fronted entrance lobby with a cafeteria, and indoor/outdoor café-type seating. The two floors above it will be gallery floors providing large open study areas. These three floors will each extend over approximately 300 m² (~3,230 sq. ft.). Floors four through seven (870 m² each, ~9,360 sq. ft.)

will "hover" over the Fishbach building and house laboratories, offices, and meeting rooms. The fifth floor will include a bridge linking the Zisapel Research Building to the Bella Meyer Advanced Technology Center. Two levels of underground parking will be constructed.

The addition of these facilities will play a major role in the advancement of the Viterbi Faculty of Electrical and Computer Engineering. The ability to provide first-rate working conditions is vital to the efforts to recruit the best faculty members and students. Providing them the facilities they need to develop the technologies of the future will make you a partner in Israel's continued defense and economic development. Available facilities are listed below.



Ph.D. student Adi Hanuka is featured in *Forbes Magazine's* 30 under 30

Naming Opportunities

Donor recognition will be in accordance with Technion standards.

Floor	Description	Cost (\$)
Ground	Outdoor Deck	500,000
	Cafeteria	100,000
	Patio	100,000
	Naming of Ground Floor	1,500,000
Gallery Level 1	Open Study Area	350,000
Gallery Level 2	Open Study Area	350,000
Floor 4	Research Laboratory 1	500,000
	Research Laboratory 2	500,000
	Research Laboratory 3	500,000
	Office Complex (11 offices)	1,100,000
	Conference Room	100,000
	Lobby/Study Area/Meeting Area	150,000
	Small Study Corner	75,000
	Naming of Floor 4	1,500,000
	Research Laboratory 1	500,000
	Research Laboratory 2	500,000
Floor 5 (Bridge Floor)	Computer Center	250,000
	Office Complex (8 + 1 double-size)	1,000,000
	Lobby/Study Area/Meeting Area	350,000
	Bridge	500,000
	Naming of Floor 5	1,500,000

Floor	Description	Cost (\$)
Floor 6	Research Laboratory 1	500,000
	Research Laboratory 2	500,000
	Research Laboratory 3	500,000
	Office Complex (11 offices)	1,100,000
	Conference Room	100,000
	Lobby/Study Area/Meeting Area	150,000
	Small Study Corner	75,000
	Naming of Floor 6	1,500,000
Floor 7	Research Laboratory 1	500,000
	Research Laboratory 2	500,000
	Research Laboratory 3	500,000
	Office Complex (11 offices)	1,100,000
	Conference Room	100,000
	Lobby/Study Area/Meeting Area	150,000
	Small Study Corner	75,000
	Naming of Floor 7	1,500,000



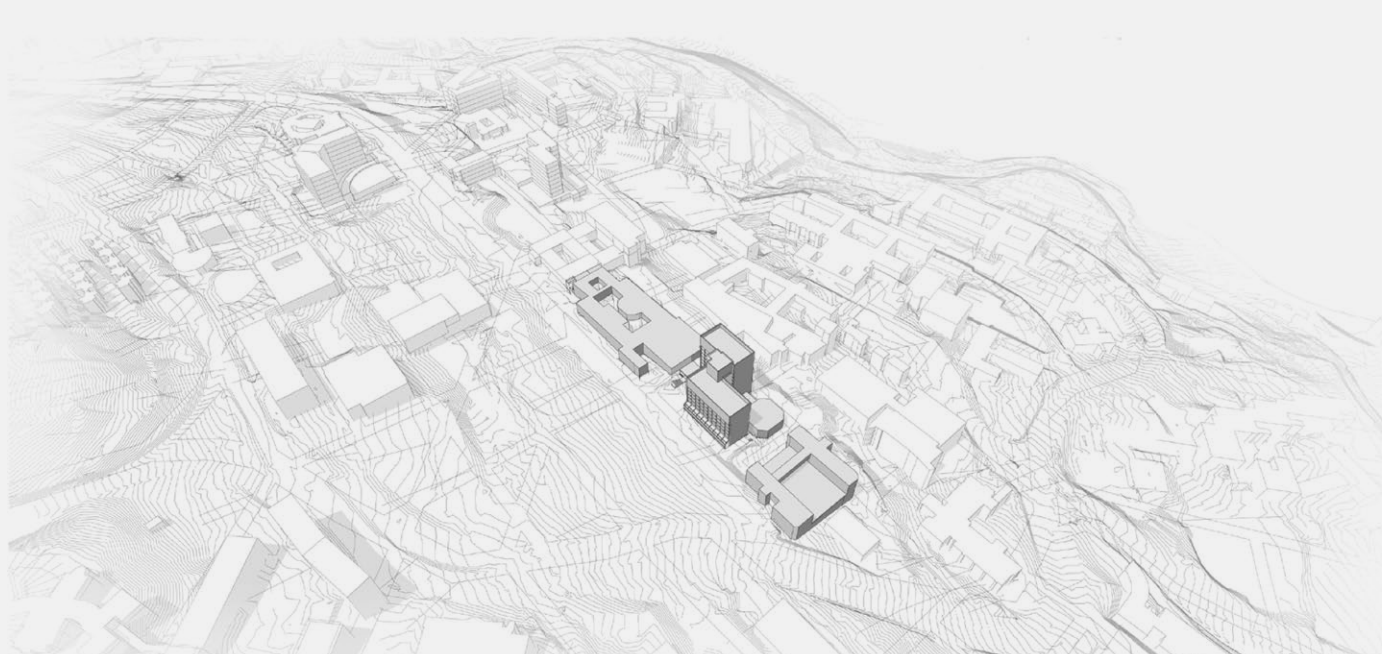
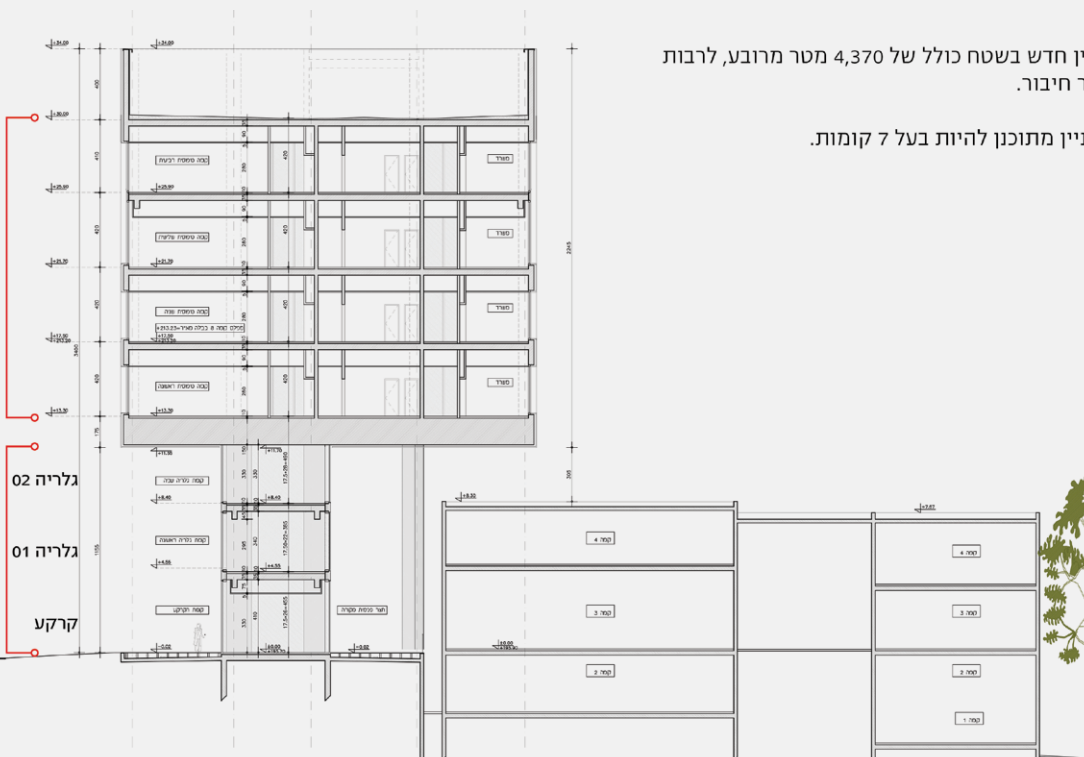
Building Cross Section

יין חדש בשטח כולל של 4,370 מטר מרובע, לרבות
 אר חיבור.

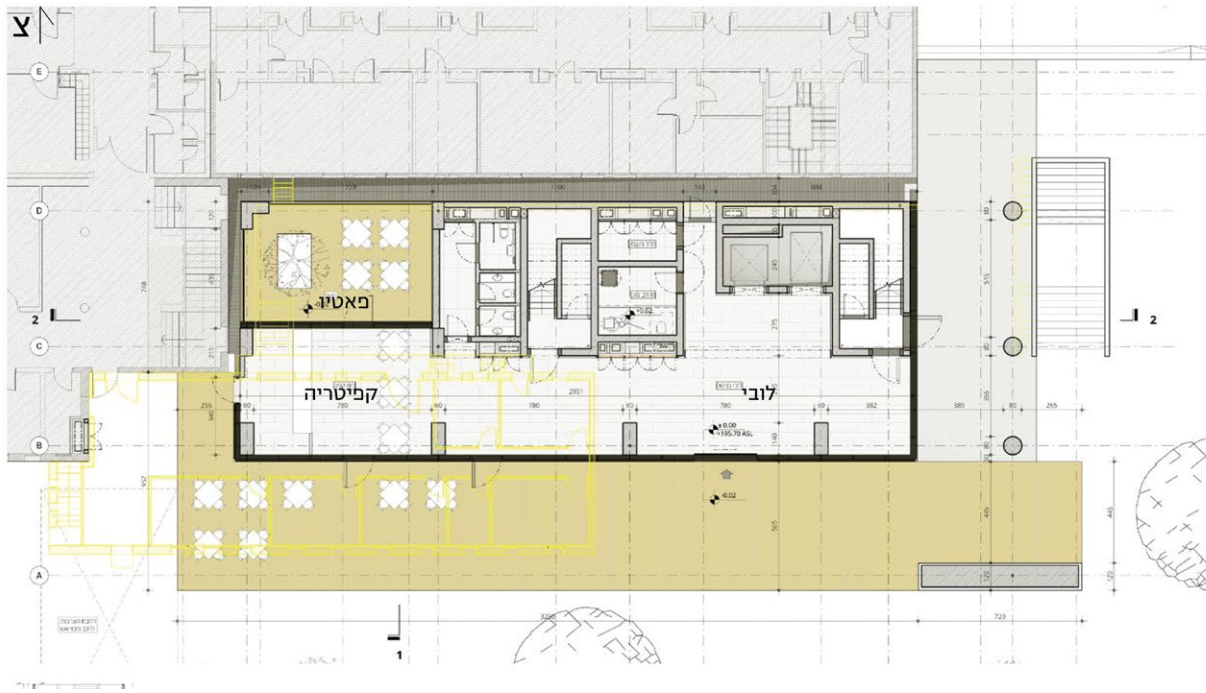
בניין מתוכנן להיות בעל 7 קומות.

4 קומות טיפוסיות
 870 מטר מרובע לקומה

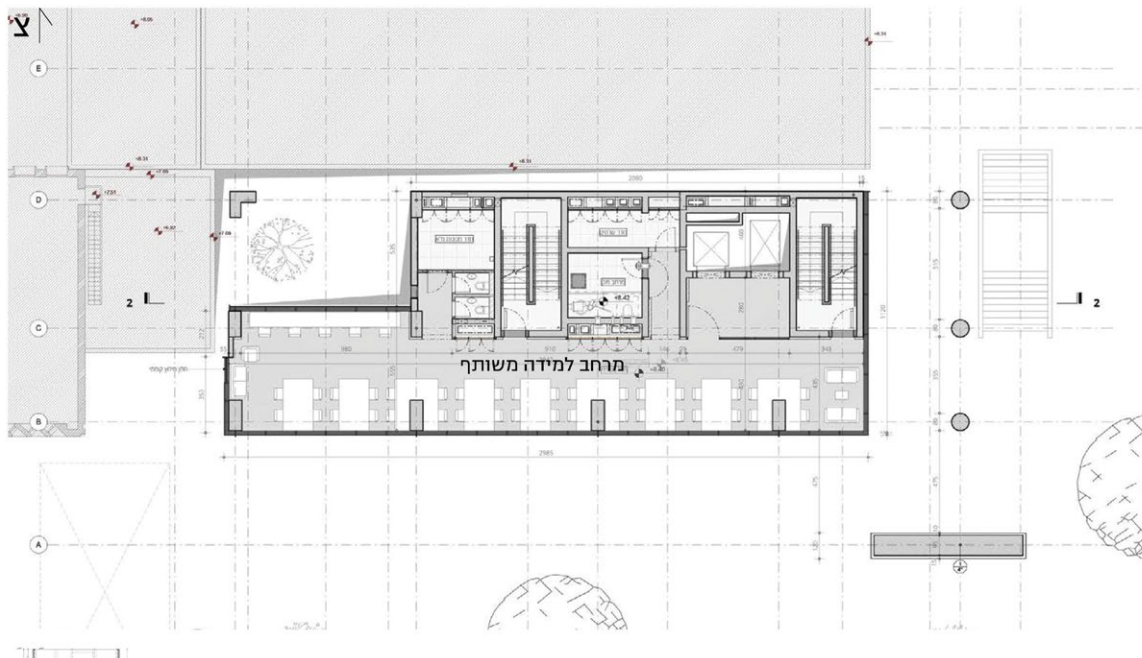
3 קומות מסד
 300 מטר מרובע לקומה



Ground Floor including Lobby and Cafeteria



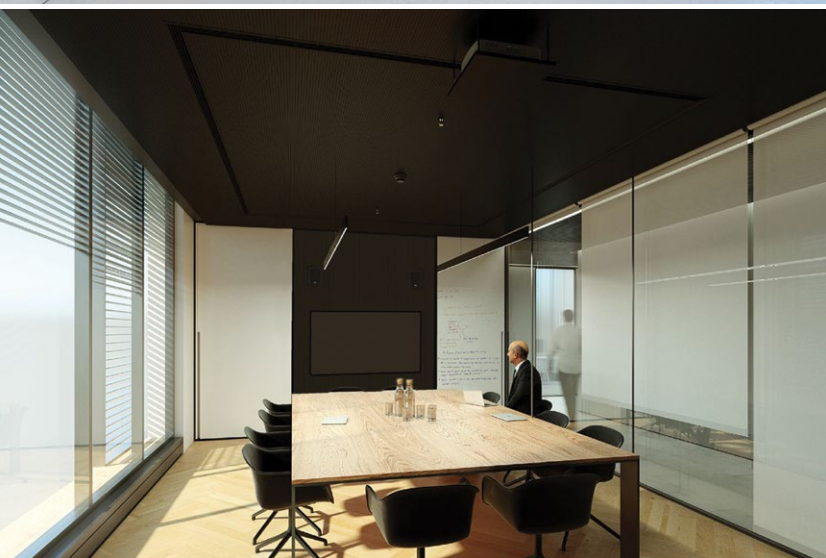
Typical Gallery Floor



Cross Section Showing Bridge



Architect's Renderings of Facilities in the Zisapel Research Building





Robotics student at the Andrew and Erna Viterbi Faculty of Electrical and Computer Engineering